



Specifications

Full Scale Capacity:

20,000 lb

Decking:

X-Lug or X-Plank rubber deck with steel I-beam construction

**Slab foundation is required*

Racks and Gates:

Constructed of three-inch steel main tubes; two-inch steel support tubes
Two end swing gates with latch (gates swing outward from scale)

Load Cells:

Single tool steel S-beam

Warranty:

Two-year limited warranty on the weighbridge
Two-year parts and electronics warranty

Approvals:

NTEP CC 94-126

Approvals



Standard Features

- Bolt-on racks and swinging gates
- Durable X-Lug or X-Plank floor over steel
- Solid 48-inch kick panel rack
- Solid 48-inch kick panel swinging gate
- Spring-loaded latch on swinging gates
- Rugged all-weather powder paint
- Scale collapses for shipping
- Factory assembly at no charge

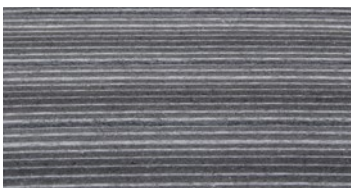
Part Number/Price

| Part # | Description | Inside Dimensions (L x W) | Outside Dimensions (L x W) | Est. Weight | Price |
|--------|--|---------------------------|----------------------------|-------------|---------|
| 132879 | Multiple animal scale - mechanical lever system with single cell | 12 ft 2 in x 6 ft 6 in | 13 x 9 ft | 5,550 lb | Consult |
| 132881 | Multiple animal scale - mechanical lever system with single cell | 14 ft 1 in x 6 ft 6 in | 15 x 9 ft | 6,040 lb | Consult |
| 132882 | Multiple animal scale - mechanical lever system with single cell | 16 ft 1 in x 6 ft 6 in | 17 x 9 ft | 6,650 lb | Consult |
| 132883 | Multiple animal scale - mechanical lever system with single cell | 18 ft 1 in x 6 ft 6 in | 19 x 9 ft | 7,210 lb | Consult |

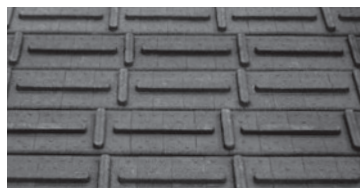
Price does not include instrumentation

Options/Accessories

| Part # | Description | Price |
|--------|---|---------|
| 215306 | 482-AG Indicator, LCD display, 115 VAC | Consult |
| 169478 | 920i indicator with group software 12V DC | Consult |
| 167689 | 920i indicator with group software, 115V | Consult |
| 156758 | AC adapter for 920i weigh center or indicator | Consult |
| 23113 | TM-U295 ticket printer | Consult |
| 15547 | Blunt end cable for printer to indicator | Consult |
| 71630 | Tickets for TM-U295 prints 4.25 x 7 in | Consult |
| 130961 | Factory scale assembly | Consult |
| 189536 | Solar panel retrofit kit | Consult |



X-Plank rubber floor



X-Lug rubber floor