



Picture is a representation of actual product

### Approvals



### Order Information

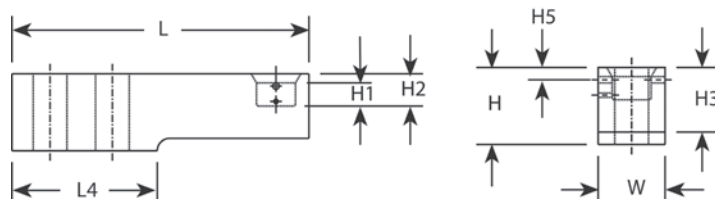
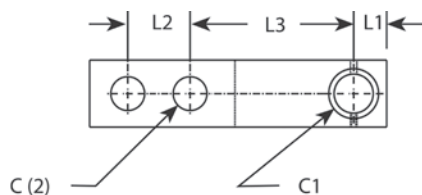
Load Rating	Part #	Est. Weight	Price
<b>NTEP Certified/OIML</b>			
5 kN	33387	3 lb	Consult
10 kN	33388	3 lb	Consult
20 kN	33389	3 lb	Consult
50 kN	33390	7 lb	Consult
<b>Non-NTEP Certified/Non-OIML</b>			
100 kN	33391	16 lb	Consult

### 30 ft Cables

Load Rating	Part #	Est. Weight	Price
<b>NTEP Certified/OIML</b>			
5 kN	100174	5 lb	Consult
10 kN	100175	5 lb	Consult
20 kN	100176	5 lb	Consult
50 kN	100177	7 lb	Consult
<b>Non-NTEP Certified/Non-OIML</b>			
100 kN	100178	16 lb	Consult

### Dimensions

Rated Capacity	C	C1	H	H1	H2	H3	H5	L	L1	L2	L3	L4	W
5 to 20	0.53	0.71	1.42	0.39	0.59	1.19	0.16	6.10	0.59	1.38	3.15	2.98	1.18
50	0.85	0.98	1.93	0.58	0.81	1.62	0.31	7.48	0.83	1.57	4.13	3.66	1.69
100	1.06	1.18	2.87	0.82	1.21	2.43	—	9.65	1.19	1.97	5.31	4.72	2.36



### Weigh Module Available

RICE LAKE WEIGHING SYSTEMS  
**Paramounts® EP**.....page 37

### Specifications

- Full Scale Output:**  
2.0 mV/V  
mV/V/ohm calibration
- Output Resistance:**  
1,000 (± 2) ohm
- Input Resistance:**  
1,100 (± 50) ohm
- Material/Finish:**  
Stainless steel
- Temperature:**  
Compensated range  
14 °F to 104 °F (-10 °C to 40 °C)  
Operating range  
0 °F to 150 °F (-18 °C to 65 °C)
- Seal Type:**  
Environmentally sealed, IP67
- Safe Overload:**  
200% full scale
- Safe Sideload:**  
100% full scale
- Rated Excitation:**  
5 to 10 VDC (15 V maximum)
- Combined Error:**  
± 0.03% full scale
- Insulation Resistance:**  
10,000 megohm
- Deflection at Capacity:**  
5 kN: 0.008 in  
10 kN: 0.012 in  
20 kN: 0.02 in  
50 kN: 0.012 in
- Cable Length:**  
5 to 20 kN: 10 ft  
50 to 100 kN: 15 ft  
Also available in 30 ft
- Cable Diameter:**  
0.196 in  
Polyurethane jacket
- Cable Color Code:**  
Green +Excitation  
Black -Excitation  
White +Signal  
Red -Signal  
Yellow Shield
- Warranty:**  
One-year limited
- Approvals:**  
FM  
NTEP  
OIML