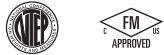




Picture is a representation of actual product

### Approvals



PN 154800 shown

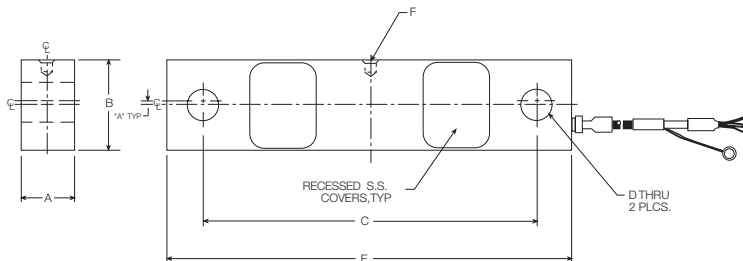
### Order Information

Load Rating	Part #	Est. Weight	Price
<b>Alloy Steel</b>			
40,000 lb	47850	18 lb	Consult
50,000 lb	47851	18 lb	Consult
<b>Stainless Steel</b>			
50,000 lb (welded-seal)	67387	18 lb	Consult
50,000 lb* (environmentally sealed)	154800	18 lb	Consult
<b>Mounting Assembly Accessories*</b>			
Load Button	25524	1 lb	Consult
Load Pin	50807	1 lb	Consult
Bearing Screw	44837	1 lb	Consult
Bushing	50748	1 lb	Consult
Load Cell Stand	50767	1 lb	Consult
Support Pin	50747	1 lb	Consult
Washer	15180	1 lb	Consult
Cotter Pin	15244	1 lb	Consult
Load Button (use with 154800)*	154802	1 lb	Consult

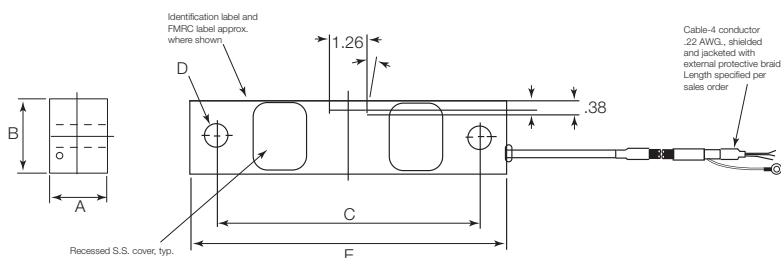
\*Counterbored hole for load button

### Dimensions

Rated Capacity	A	B	C	D	E	F
40,000 lb/in	1.94	2.44	8.75	0.78	10.50	0.257 × 0.375 DP
50,000 lb/in	1.94	2.44	8.75	0.78	10.50	0.257 × 0.375 DP



PN 47850, 47851, 67387



PN 154800

### Interchangeable Products

- FAIRBANKS®  
**Rodan 90814-40 k**
- FAIRBANKS  
**Rodan 91088-50 k**

### Specifications

- Full Scale Output:**  
3.0 mV/V
- Output Resistance:**  
699 to 707 ohms
- Input Resistance:**  
686 to 714 ohm
- Material/Finish:**  
High-alloy steel, nickel plated  
Stainless steel
- Temperature:**  
Compensated range  
14 °F to 104 °F (-10 °C to 40 °C)  
Operating range  
0 °F to 150 °F (-18 °C to 65 °C)
- Seal Type:**  
Environmentally sealed, IP67  
Welded-seal, IP67: pn 67387
- Safe Overload:**  
150% full scale
- Safe Sideload:**  
100% full scale
- Rated Excitation:**  
5 to 10 V DC (15 V maximum)
- Combined Error:**  
0.02% full scale
- Insulation Resistance:**  
5,000 megohm
- Cable Length:**  
60 ft, copper over braid
- Cable Diameter:**  
0.230 in  
Polyurethane jacket
- Cable Coloring:**  
Red +Excitation  
Black -Excitation  
Green +Signal  
White -Signal
- Warranty:**  
One-year limited

### Approvals:

- cFMus
- NTEP