



Picture is a representation of actual product

Approvals



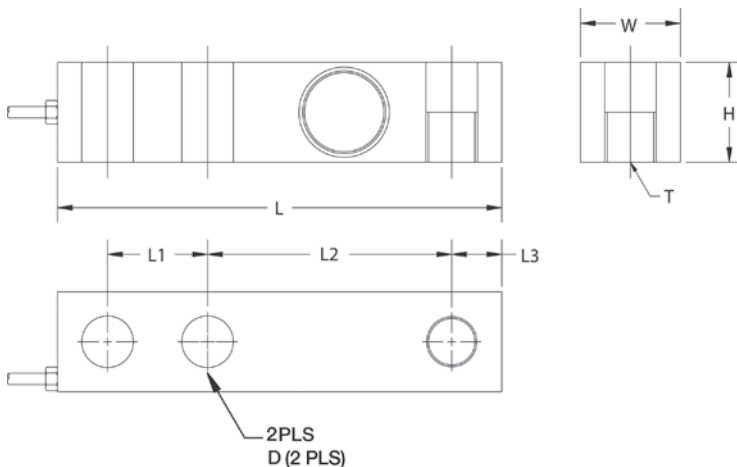
Order Information

Load Rating	Part #	Est. Weight	Price
1,000 lb	67118	3 lb	Consult
2,000 lb	67119	3 lb	Consult
2,500 lb	67120	3 lb	Consult
3,000 lb	67121	3 lb	Consult
4,000 lb	67122	3 lb	Consult
5,000 lb SE	67123	3 lb	Consult
5,000 lb LE	67124	5 lb	Consult
10,000 lb	67125	5 lb	Consult

SE=small envelope; LE=large envelope

Dimensions

Rated Capacity	L	L1	L2	L3	W	H	D	T
1,000 to 5,000 SE	5.12	1.00	3.00	0.50	1.25	1.25	0.53	1/2-20 UNF
5,000 LE to 10,000	6.75	1.50	3.75	0.75	1.50	1.50	0.78	3/4-16 UNF



Interchangeable Products

VPG® SENSORTRONICS
65083..... page 284

Weigh Module Available

RICE LAKE WEIGHING SYSTEMS
RL1800 Series..... page 42

Specifications

Full Scale Output:

3.0 mV/V

Output Resistance:

350 (± 3) ohm

Input Resistance:

385 (± 5) ohm

Material/Finish:

Stainless steel

Temperature:

Compensated range
 14 °F to 104 °F (-10 °C to 40 °C)
 Operating range
 0 °F to 150 °F (-18 °C to 65 °C)

Seal Type:

Welded-seal, IP67

Safe Overload:

150% full Scale

Safe Sideload:

100% full scale

Rated Excitation:

5 to 10 VDC (15 V maximum)

Combined Error:

0.02 full scale

Insulation Resistance:

5,000 megohm

Cable Length:

20 ft

Cable Diameter:

0.200 in
 Polyurethane jacket

Cable Color Code:

Red +Excitation
 Black -Excitation
 Green +Signal
 White -Signal

Warranty:

One-year limited

Approvals:

cFMus
 NTEP