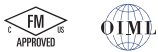




Picture is a representation of actual product

Approvals

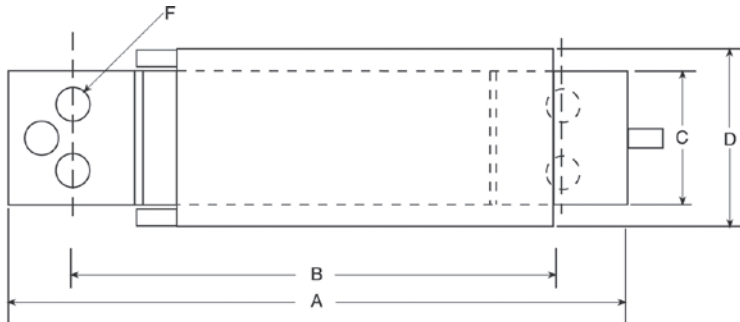


Order Information

Load Rating	Part #	Est. Weight	Price
3 kg	47882	1 lb	Consult
5 kg	47883	1 lb	Consult
7 kg	47884	1 lb	Consult
10 kg	47885	1 lb	Consult

Dimensions

Rated Capacity	A	B	C	D	E	F
kg/mm						
3 to 10	117.9	93.7	25.4	33.3	32.5	1/4-20UNC x 10 DP



Specifications

Full Scale Output:

2.0 mV/V

Output Resistance:

350 (± 3) ohm

Input Resistance:

415 (± 15) ohm

Material/Finish:

Anodized aluminum

Temperature:

Operating range
0 °F to 150 °F (-18 °C to 65 °C)

Seal Type:

Environmentally sealed, IP65

Safe Overload:

150% full scale

Rated Excitation:

5 to 10 VDC (15 V maximum)

Combined Error:

0.02% full scale

Insulation Resistance:

5,000 megohm

Deflection at Capacity:

0.015 in

Cable Length:

1 m

Cable Diameter:

0.200 in PVC jacket

Cable Color Code:

Green +Excitation
Black -Excitation
Red +Signal
White -Signal
Blue +Sense
Brown -Sense

Platform Size:

13.78 x 13.78 in

Warranty:

One-year limited

Approvals:

cFMus
OIML