



Picture is a representation of actual product

### Approvals

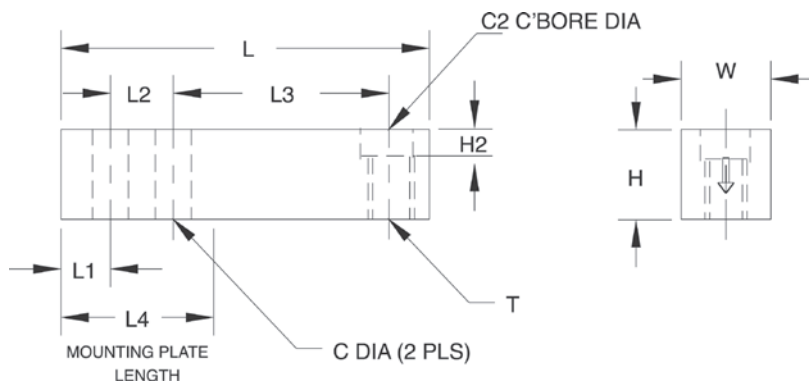


### Order Information

Load Rating	Part #	Est. Weight	Price
1,000 lb	17221	3 lb	Consult
2,500 lb	17222	3 lb	Consult
4,000 lb	17223	3 lb	Consult
5,000 lb	17224	5 lb	Consult
10,000 lb	17225	5 lb	Consult

### Dimensions

Rated Capacity	C	C2	H	H2	L	L1	L2	L3	L4	T	W
lb/in											
1,000 to 4,000	0.53	0.81	1.25	0.56	6.12	1.62	1.00	3.00	3.38	1/2-20 UNF	1.25
5,000 to 10,000	0.78	1.19	1.50	0.59	7.71	1.71	1.50	3.75	4.08	3/4-16 UNF	1.50



### Specifications

- Full Scale Output:**  
3.0 mV/V
- Output Resistance:**  
350 (± 3.5) ohm
- Input Resistance:**  
350 (± 3.5) ohm
- Material/Finish:**  
Stainless steel
- Temperature:**  
Operating range  
0 °F to 150 °F (-18 °C to 65 °C)
- Seal Type:**  
Welded-seal, IP67
- Safe Overload:**  
150% full scale
- Safe Sideload:**  
100% full scale
- Rated Excitation:**  
5 to 10 VDC (15 V maximum)
- Non-repeatability:**  
0.01% full scale
- Combined Error:**  
0.03% full scale
- Insulation Resistance:**  
5,000 megohm
- Deflection at Capacity:**  
1,000 lb: 0.016 in  
2,500 lb: 0.03 in  
4,000 lb: 0.041 in  
5,000 lb: 0.035 in  
10,000 lb: 0.042 in
- Cable Length:**  
20 ft
- Cable Color Code:**  
Red +Excitation  
Black -Excitation  
Green +Signal  
White -Signal
- Warranty:**  
One-year limited
- Approvals:**  
cFMus