



Picture is a representation of actual product

**Approvals**

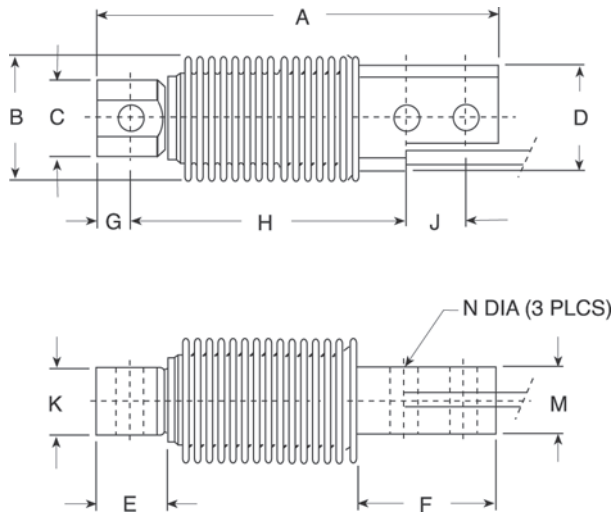


**Order Information**

Load Rating	Part #	Est. Weight	Price
20 kg	28801	2 lb	Consult
50 kg	28802	2 lb	Consult
100 kg	28803	2 lb	Consult
200 kg	28804	2 lb	Consult

**Dimensions**

Rated Capacity	A	B	C	D	E	F	G	H	J	K	M	N
kg/mm												
20 to 200	120.0	38.0	22.9	31.7	21.2	42.0	10.0	82.0	18.0	20.0	20.0	8.20



**Interchangeable Products**

- RICE LAKE WEIGHING SYSTEMS
- RLHBB**
- HBK®
- Z6** ..... page 226
- VPG® TEDEA-HUNTLEIGH
- 355** ..... page 309

**Specifications**

- Full Scale Output:**  
2.0 mV/V
- Output Resistance:**  
350 (± 3.5) ohm
- Input Resistance:**  
460 (± 3.5) ohm
- Material/Finish:**  
Stainless steel
- Temperature:**  
Compensated range  
14 °F to 104 °F (-10 °C to 40 °C)  
Operating range  
0 °F to 150 °F (-18 °C to 65 °C)
- Seal Type:**  
Welded-seal, IP67
- Safe Overload:**  
150% full scale
- Rated Excitation:**  
5 to 10 VDC (15 V maximum)
- Combined Error:**  
0.02% full scale (SHB-A3)
- Non-repeatability:**  
0.01% full scale
- Insulation Resistance:**  
5,000 megohm
- Deflection at Capacity:**  
0.4 mm
- Cable Length:**  
10 ft
- Cable Color Code:**  
Green +Excitation  
Black -Excitation  
White +Signal  
Red -Signal
- Warranty:**  
One-year limited
- Approvals:**  
cFMus  
NTEP