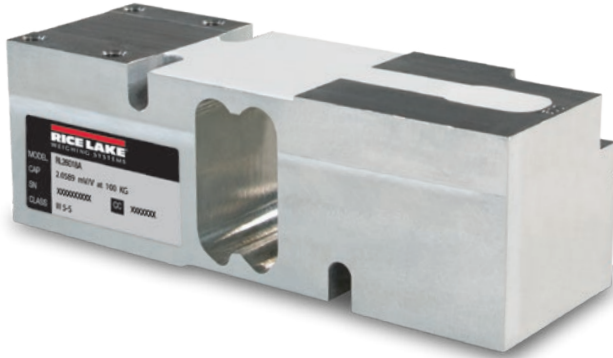


SINGLE POINT  
**RL26018A**

Aluminum, Environmentally Sealed, NTEP Certified 1:5,000 Class III Single Cell, IP67

**Solo Basculas**  
SOLUCIONES DE PESO



Picture is a representation of actual product.

**Approvals**

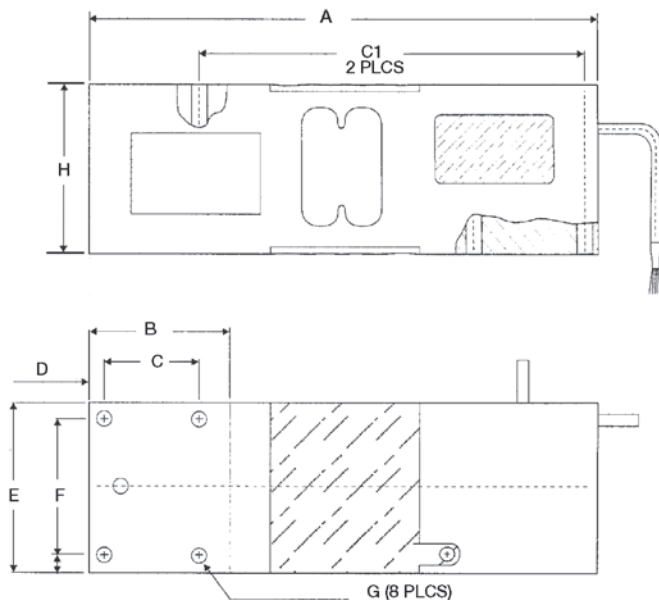


**Order Information**

Load Rating	Part #	Est. Weight	Price
50 kg	<b>188682</b>	5 lb	Consult
75 kg	<b>188683</b>	5 lb	Consult
100 kg	<b>188684</b>	5 lb	Consult
150 kg	<b>188685</b>	5 lb	Consult
200 kg	<b>188686</b>	5 lb	Consult
250 kg	<b>188687</b>	5 lb	Consult
300 kg	<b>188688</b>	5 lb	Consult
500 kg	<b>188689</b>	5 lb	Consult
635 kg	<b>188690</b>	5 lb	Consult

**Dimensions**

Rated Capacity	A	B	C	C1	D	E	F	G	H
kg/mm									
50 to 635	188.0	52.0	35.0	142.0	5.5	63.5	50.0	5/16-18 UNC	62.3



**Interchangeable Products**

RICE LAKE WEIGHING SYSTEMS

**RL1260**

RICE LAKE WEIGHING SYSTEMS

**RLPWM16**

VPG® TEDEA-HUNTLEIGH®

**1260**

**Specifications**

**Full Scale Output:**

2.0 mV/V nominal

**Output Resistance:**

350 (± 3) ohm

**Input Resistance:**

415 (± 15) ohm

**Material/Finish:**

Anodized aluminum

**Temperature:**

Compensated range

14 °F to 104 °F (-10 °C to 40 °C)

Operating range

0 °F to 150 °F (-18 °C to 65 °C)

**Seal Type:**

Environmentally sealed, IP67

**Safe Overload:**

150% of full scale

**Rated Excitation:**

5 to 10 VDC (15 V maximum)

**Insulation Resistance:**

>5,000 megohm

**Combined Error:**

0.02% full scale

**Deflection:**

0.3 to 0.5 mm

**Cable Length:**

10 ft

**Cable Color Code:**

Green +Excitation

Black -Excitation

Red +Signal

White -Signal

Blue +Sense

Yellow -Sense

**Warranty:**

Two-year limited

**Approvals:**

cFMus

NTEP 18-108