

RL32018 Painted

Alloy Steel, Environmentally Sealed, NTEP Certified 1:5,000 Class III Multiple Cell, IP66



Picture is a representation of actual product.

Approvals



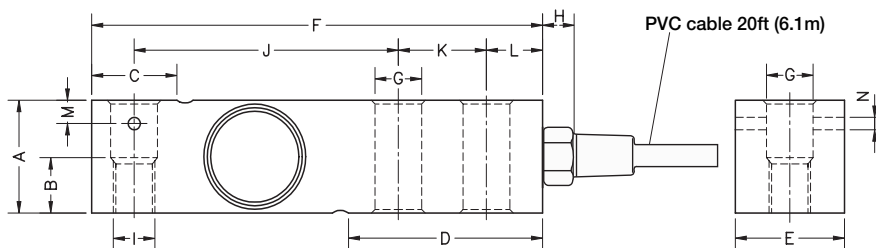
Order Information

Load Rating	Part #	Est. Weight	Price
NTEP Certified			
1,000 lb	207842	2 lb	Consult
1,500 lb	207843	2 lb	Consult
2,000 lb	207844	2 lb	Consult
2,500 lb	207845	2 lb	Consult
3,000 lb	207846	5 lb	Consult
4,000 lb	207847	5 lb	Consult
5,000 lb SE	207848	5 lb	Consult
5,000 lb LE	207850	5 lb	Consult
10,000 lb	207851	5 lb	Consult
Non-NTEP Certified			
15,000 lb	207852	10 lb	Consult
20,000 lb	207853	10 lb	Consult

SE=small envelope; LE=large envelope

Dimensions

Rated Capacity	A	B	C	D	E	F	G	H	I	J	K	L	M	N
lb/in														
1,000 to 5,000 SE	1.24	0.59	0.96	2.20	1.24	5.12	0.53	0.70	1/2-20 UNF	3.00	1.00	0.62	0.25	0.13
5,000 LE to 10,000	1.50	-	1.45	2.99	1.50	6.75	0.80	0.70	3/4-16 UNF	3.75	1.50	0.75	-	-
15,000 to 20,000	2.00	-	-	4.00	2.00	8.75	1.06	-	1-14 UNS	4.90	2.00	1.00	-	-



Interchangeable Products

- VPG® SENSORTRONICS®
65023A.....page 281
- VPG® CELTRON
SQB.....page 191

Weigh Module Available

- RICE LAKE WEIGHING SYSTEMS
RL50210TA..... page 31
- RICE LAKE WEIGHING SYSTEMS
RL1800 Series..... page 42

Specifications

- Full Scale Output:**
3.0 mV/V ±0.05% current matched
- Output Resistance:**
350 (± 3) ohm
- Input Resistance:**
400 (± 20) ohm
- Material/Finish:**
Alloy steel, nickel plated, painted
- Temperature:**
Compensated range
-14 °F to 104 °F (-10 °C to 40 °C)
Operating range
0 °F to 150 °F (-18 °C to 65 °C)
- Seal Type:**
Environmentally sealed, IP66
- Safe Overload:**
150% full scale
- Safe Sideload:**
100% full scale
- Rated Excitation:**
10 VDC (15 V maximum)
- Combined Error:**
0.017% full scale
- Insulation Resistance:**
>5,000 megohm
- Deflection:**
0.2 to 0.4 mm
- Cable Length:**
20 ft
- Cable Color Code:**
Red +Excitation
Black -Excitation
Green +Signal
White -Signal
- Warranty:**
Two-year limited
- Approvals:**
cFmus
NTEP 18-106