



Picture is a representation of actual product.

Approvals



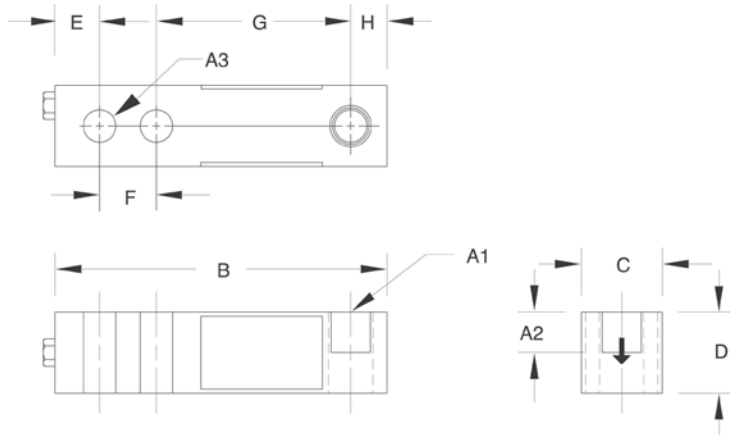
Order Information

| Load Rating | Part # | Est. Weight | Price |
|---|--------|-------------|---------|
| 20 ft Cables | | | |
| 250 lb | 17386 | 3 lb | Consult |
| 500 lb | 17387 | 3 lb | Consult |
| 1,000 lb | 17189 | 3 lb | Consult |
| 2,500 lb | 17191 | 3 lb | Consult |
| 4,000 lb | 17193 | 3 lb | Consult |
| 5,000 lb | 17194 | 5 lb | Consult |
| 10,000 lb | 17195 | 5 lb | Consult |
| 30 ft Cables | | | |
| 4,000 lb | 95562 | 3 lb | Consult |
| Conduit Adapter Kit (must be factory installed to maintain warranty) | | | |
| 3/8-24 nipple | 31533* | 1 lb | Consult |
| 3/8-24 to 1/4-18NPT | 31534* | 1 lb | Consult |

* PN 31533 and PN 31534 must be installed together to form the Conduit Adapter Kit

Dimensions

| Rated Capacity | A1 | A2 | A3 | B | C | D | E | F | G | H |
|-----------------|------------|------|------|------|------|------|------|------|------|------|
| lb/in | | | | | | | | | | |
| 250 to 4,000 | 1/2-20 UNF | 0.60 | 0.53 | 5.12 | 1.25 | 1.25 | 0.62 | 1.00 | 3.00 | 0.50 |
| 5,000 to 10,000 | 3/4-16 UNF | 0.75 | 0.78 | 6.75 | 1.50 | 1.50 | 0.75 | 1.50 | 3.75 | 0.75 |



Interchangeable Products

VPG® REVERE

9123.....page 247

ARTECH®

SS30310

Weigh Module Available

RICE LAKE WEIGHING SYSTEMS

RL50210TA..... page 31

RICE LAKE WEIGHING SYSTEMS

RL1800 Series..... page 42

Specifications

Full Scale Output:

3.0 mV/V

Output Resistance:

349 to 355 ohm

Input Resistance:

343 to 357 ohm

Material/Finish:

Stainless steel

Temperature:

Operating range:
0 °F to 150 °F (-18 °C to 65 °C)

Seal Type:

Environmentally sealed, IP67

Safe Overload:

150% full scale

Safe Sideload:

100% full scale

Rated Excitation:

5 to 10 VDC (15 V maximum)

Nonlinearity:

0.03% full scale

Hysteresis:

0.02% full scale

Insulation Resistance:

5,000 megohm

Deflection at Capacity:

250 to 1,000 lb: 0.013 in
2,000 to 3,000 lb: 0.015 in
4,000 to 5,000 lb: 0.025 in
10,000 lb: 0.32 in

Cable Length:

20 ft

30 ft

Cable Diameter:

0.200 in polyurethane jacket

Cable Color Code:

Red +Excitation
Black -Excitation
Green +Signal
White -Signal

Warranty:

Two-year limited

Approvals:

cFMus