

DOUBLE-ENDED BEAM  
**RL75016WHE**

Stainless Steel, Hermetically Sealed, IP69K



Picture is a representation of actual product.

**Approvals**

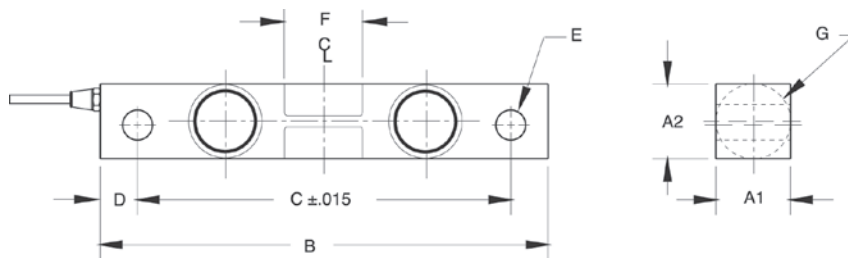


**Order Information**

Load Rating	Part #	Est. Weight	Price
1,000 lb	<b>67043</b>	4 lb	Consult
1,500 lb	<b>67044</b>	4 lb	Consult
2,000 lb	<b>67045</b>	4 lb	Consult
2,500 lb	<b>67046</b>	4 lb	Consult
5,000 lb	<b>67047</b>	4 lb	Consult
10,000 lb	<b>67048</b>	7 lb	Consult
15,000 lb	<b>67049</b>	7 lb	Consult
20,000 lb	<b>67050</b>	7 lb	Consult
25,000 lb	<b>67051</b>	7 lb	Consult

**Dimensions**

Rated Capacity	A1	A2	B	C	D	E	F	G	CONDUIT ADAPTER
lb/in									
1,000 to 5,000	1.22	1.22	7.50	6.25	0.62	0.50	1.12	1.25	1/2-14 NPT
10,000 to 25,000	1.44	1.94	8.75	7.50	0.62	0.81	1.62	1.99	1/2-14 NPT



**Interchangeable Products**

- RICE LAKE WEIGHING SYSTEMS  
**RL75016SS\*** ..... page 133
- RICE LAKE WEIGHING SYSTEMS  
**RL75016SS-W\*** ..... page 134
- VPG® SENSORTRONICS®  
**65016W\*** ..... page 291
- VPG® SENSORTRONICS  
**65016WH** ..... page 292

**Weigh Module Available**

- RICE LAKE WEIGHING SYSTEMS  
**RL1600 Series** page 67 and page 69  
\*Welded seal

**Specifications**

- Full Scale Output:**  
3.0 mV/V
- Output Resistance:**  
699 to 707 ohm
- Input Resistance:**  
686 to 714 ohm
- Material/Finish:**  
Stainless steel
- Temperature:**  
Operating range  
0 °F to 150 °F (-18 °C to 65 °C)
- Seal Type:**  
Hermetically sealed, IP69K
- Safe Overload:**  
150% full scale
- Safe Sideload:**  
100% full scale
- Rated Excitation:**  
5 to 10 VDC (15 V maximum)
- Combined Error:**  
0.03% full scale
- Insulation Resistance:**  
2,000 megohm
- Cable Length:**  
25 ft
- Cable Diameter:**  
0.200 in  
Polyurethane jacket
- Cable Color Code:**  
Red +Excitation  
Black -Excitation  
Green +Signal  
White -Signal
- Warranty:**  
Two-year limited
- Approvals:**  
cFMus